



M16 R / M1600 R

USER'S MANUAL

WARNING:

READ THE INSTRUCTIONS AND SAFETY PRECAUTIONS IN THIS MANUAL CAREFULLY BEFORE USING THIS FIREARM.

DISCHARGING FIREARMS IN POOLY VENTILATED AREAS, CLEANING FIREARMS OR HANDLING AMMUNITION MAY RESULT IN EXPOSURE TO LEAD AND OTHER SUSBSTANCES KNOWN TO THE STATE OF CALIFORNIA TO CAUSE BIRTH DEFECT, REPRODUCTIVE HARM AND OTHER SERIOUS PHYSICAL INJURY. HAVE ADEQUATE VENTILATED AT ALL TIMES. WASH YOUR HANDS THOROUGHLY AFTER EXPOSURE.

OPERATING INSTRUCTIONS

This rifle is shipped from the factory fully assembled and ready to shoot. Clean the rifle from excessive oil and grease before using.

TO LOAD MAGAZINE: Hold the magazine box firmly with one hand and, with the other, place a cartridge into the magazine throat just in front of the supporting notch. Push the cartridge head down and rearward until it is securely locked in place. A maximum of fifteen rounds may be loaded.

TO ATTACH MAGAZINE: Push the magazine into the trigger guard housing opening, until the magazine locks in place.

TO DETACH MAGAZINE: Push magazine release forward until the magazine catch releases the magazine. Pull the magazine away from the trigger guard.

TO MAKE GUN SAFE: Safety lever is at the right side of the receiver and at the back of the bolt operating handle. Pull safety latch toward the “S” mark on the receiver. This locks trigger and gun cannot be fired.

TO LOAD CHAMBER: With the safety on, insert a loaded magazine into the rifle. Pull the bolt operating handle all the way to the rear and release, allowing the bolt to move forward under full force of the operating springs. Bolt automatically picks up a cartridge from the magazine and feeds it into the chamber. Do not ease bolt forward.

TO FIRE: Be sure gun is pointed at safe target. Release safety and pull the trigger. Pressure from the burning powder opens up bolt, ejects empty shell, and reloads the chamber for the next shot. Pull the trigger again. Gun fires as fast as trigger is pulled until magazine is empty.

TO UNLOAD WITHOUT FIRING: Draw safety on and release the magazine from guard. Work action several times to remove any cartridge left inside the chamber. Slide bolt handle rearward and lock piece. Inspect the chamber to make sure no cartridge is left. Empty magazine can be placed back if desired.

1. DISASSEMBLY

A. STOCK AND TRIGGER GUARD HOUSING

1. Remove the magazine by depressing the magazine catch.
2. Remove front screw of the trigger guard housing and detach barrel-receiver assembly from the stock.

B. TRIGGER GROUP

1. Trigger housing may be disassembled by unscrewing the two hold down screws. (This step is not advisable unless necessary)
2. Remove the trigger by punching out trigger stop pin and pivot pin.
3. Remove the trigger spring and spring follower at the end of the housing.

C. BOLT DISASSEMBLY

1. Loosen receiver cap lock screw and unscrew receiver cap. Be careful, as spring inside are under pressure.
2. Pull out the unit assembly (recoil spring, recoil spring retainer and guide sleeve, firing pin spring, firing spring pin spring guide head and stem). Keep in order together with the receiver cap to avoid confusion in re-assembly.
3. With muzzle pointing upwards, fully retract bolt handle fully to the rear end of the receiver slot.
4. Push firing pin forward so as to align its tail end approximately even with the receiver cap lock screw. (Firing pin is visible and is even with the rear end of the bolt).
5. Pull out bolt handle and operating stud and remove bolt from the receiver.

II. DISASSEMBLY

A. BOLT ASSEMBLY

1. Place firing pin at the rear end of firing pin slot in the bolt.
2. Push bolt and firing pin into the receiver and align bolt, firing pin and receiver holes so that bolt handle may be inserted through. Slide bolt forward with bolt handle until bolt stops against the rebound lever.
3. While holding the trigger back with one hand, use a nail or any pointed object to trip the rebound lever, moving it to the rear away from sear in the direction indicated by an arrow on the rebound lever. (See small sketch engrave in the trigger housing).
4. Push bolt handle forward. Slide the bolt over the rebound lever. Release the trigger.

Note: Steps 5 to 7 can be by-passed as long you follow instruction of step no.2 for bolt disassembly, keeping these components together and in order.

5. Insert recoil spring guide sleeve and retainer sleeve into the opposite end of the recoil spring.
6. Insert firing pin spring guide into the firing pin spring.
7. Insert assembly no.6, spring end first, into the recoil spring through the guide spring sleeve (shorter sleeve).

8. Insert the entire unit inside the receiver, shorter sleeve resting against the bolt together with the receiver cap and compress the springs carefully to return the receiver cap into its original position. Tighten the receiver cap lock screw.
9. Pull bolt handle back and forth several times to check the action of the bolt and trigger assembly.

B. TRIGGER ASSEMBLY

1. With gun in an upside down position, insert trigger spring follower into the trigger spring and mount it into the spring hole.
2. Insert the trigger, locating the catch of the rebound lever, with the rear catch.
3. Insert the trigger stop pin and pivot pin into their respective holes.
4. Squeeze trigger several times to check the action of trigger spring. (Pull bolt handle back and forth several times to check the trigger release cocked firing pin).

CAUTION:

The safety in your firearm is correctly designed, fitted and tested. However, any mechanical device can fail. Never point your firearm at anything but a safe target and never rely upon the safety to justify careless handling. USE HIGH VELOCITY .22 CALIBER LONG RIFLE CARTRIDGES ONLY.

When loading, pull bolt handle fully rearward and allow it to snap forward sharply. Breech area and magazine should be cleaned thoroughly.

SPECIFICATIONS

| | |
|--------------------|-----------------------------------|
| Model | 16.22 LR Semi- automatic Rifle |
| Barrel Length | 18 inches |
| Weight | 6.5 lbs. |
| Overall Length: | 38.375 inches |
| Magazine Capacity: | 15 rounds |
| Sights | Fixed Peep Rear Sight; Post Sight |
| Stock: | Black Finish wood |

Safety

Position Thumb Operated Safety

| PART NAME | PART NUMBER |
|---------------------------------------|-------------|
| A) BARREL RECEIVER ASSEMBLY | |
| Barrel Receiver Cross Pin | 1601 |
| Barrel | 1602 |
| Ejector | 1603 |
| Muzzle Brake | 1604 |
| Muzzle Brake Set Screw | 1605 |
| Front Sight | 1606 |
| Front Sight Stud | 1607 |
| Front Sight Stud Lock Screw | 1608 |
| Front Sight Set Screw | 1609 |
| Rear Sight Carrying Handle | 1610 |
| Rear Sight Carrying Handle Screw | 1611 |
| Rear Sight Carrying Handle Lock Screw | 1612 |
| Rear Sight Leaf | 1613 |
| Rear Sight Screws (two pieces) | 1614 |
| Flash Deflector | 1615 |
| Receiver | 1616 |
| Receiver Cap | 1617 |
| Receiver Cap Lock Screw | 1618 |
| B) BOLT ASSEMBLY | |
| Bolt | 1619 |
| Bolt Operating Handle | 1620 |
| Bolt Operating Stud | 1621 |
| Bolt Handle Locating Bearing | 1622 |
| Bolt Handle Locating Spring | 1623 |
| Extractor | 1624 |
| Extractor Plunger | 1625 |

| | |
|---------------------------------------|-------|
| Extractor Spring | 1626 |
| Firing Pin | 1627 |
| Firing Pin Spring | 1628 |
| Firing Pin Spring Guide Head and Stem | 1629 |
| Firing Pin Spring Guide Head Insert | 1629a |
| Recoil Spring | 1630 |
| Recoil Spring Guide Sleeve | 1631 |
| Recoil Spring Retainer Sleeve | 1632 |
| C) TRIGGER HOUSING ASSEMBLY | |
| Magazine Catch | 1633 |
| Magazine Catch Button | 1634 |
| Magazine Catch Pivot Pin | 1635 |
| Magazine Catch Stop Pin | 1635a |
| Magazine Catch Stop Spring | 1635b |
| Safety Latch | 1636 |
| Safety Latch Button | 1637 |
| Safety Latch Bearing | 1638 |
| Safety Latch Spring | 1639 |
| Safety Latch Screw | 1640 |
| Sear | 1641 |
| Sear Pivot Pin | 1642 |
| Sear Stop Pin | 1643 |
| Sear Spring | 1644 |
| Sear Spring Pin | 1645 |
| Trigger | 1646 |
| Trigger Pivot Pin | 1647 |
| Trigger Stop Pin | 1648 |
| Trigger Spring | 1649 |
| Trigger Spring Follower | 1650 |
| Rebound Lever | 1651 |

| | |
|--|-------|
| Rebound Lever Pivot Pin | 1652 |
| Rebound Lever Safety Pin | 1653 |
| Rebound Lever Spring | 1654 |
| Rebound Lever Spring Bearing | 1655 |
| Trigger Housing | 1656 |
| Trigger Housing Hold Down Screw (front) | 1657 |
| Trigger Housing Hold Down Screw Washer (front) | 1657a |
| Trigger Housing Hold Down Screw (rear) | 1658 |
| Trigger Housing Hold Down Screw Washer (rear) | 1658a |

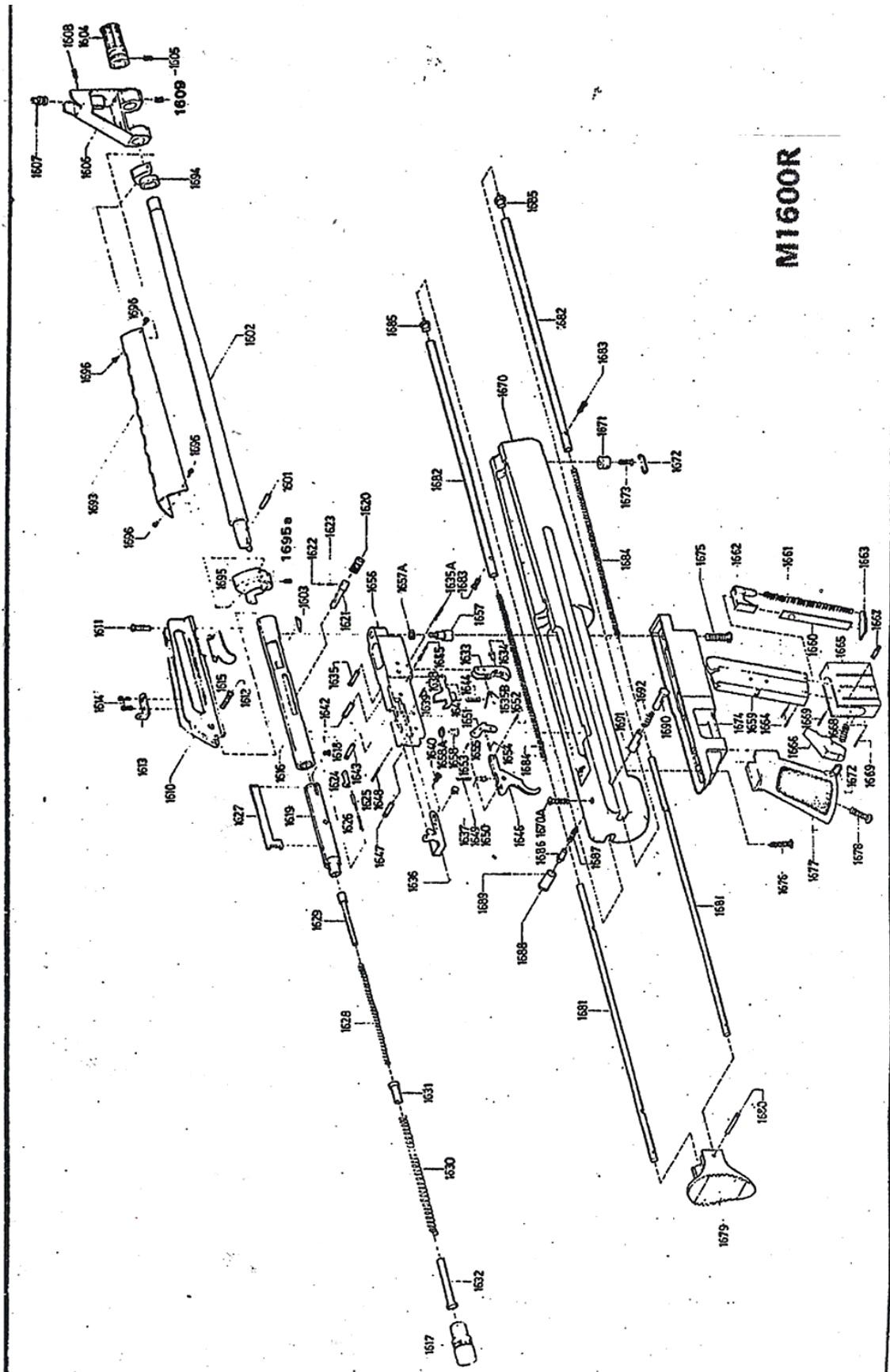
D) MAGAZINE BOX ASSEMBLY

| | |
|--|------|
| Magazine Box | 1659 |
| Magazine Box Inner Strip | 1660 |
| Magazine Spring | 1661 |
| Magazine Spring Follower | 1662 |
| Magazine Spring Retainer | 1663 |
| Magazine Spring Retainer Pin | 1664 |
| Magazine Cover | 1665 |
| Magazine Release | 1666 |
| Magazine Release Pivot Pin | 1667 |
| Magazine Release Spring | 1668 |
| Magazine Box Retainer Pin (two pieces) | 1669 |

E) GUNSTOCK ASSEMBLY

| | |
|-----------------------------|-------|
| Gun stock | 1670 |
| Crack preventive Screw | 1670a |
| Swivel Head (two pieces) | 1671 |
| Swivel Ring (two pieces) | 1672 |
| Swivel Screw (two pieces) | 1673 |
| Trigger Guard Housing | 1674 |
| Trigger Guard Screw (front) | 1675 |
| Trigger Guard Screw (rear) | 1676 |

| | |
|--|-------|
| Grip | 1677 |
| Grip Screw | 1678 |
| Butt Stock | 1679 |
| Butt Stock Retainer Pin | 1680 |
| Butt Block Extension Rod (two pieces) | 1681 |
| Extension Rod Housing (two pieces) | 1682 |
| Extension Rod Housing Hold Down Screw (two pieces) | 1683 |
| Extension Rod Spring (two pieces) | 1684 |
| Extension Rod Spring Retaining Plug (two pieces) | 1685 |
| Extension Rod Stop Button (left) | 1686 |
| Extension Rod Stop Button Spring | 1687 |
| Extension Rod Stop Button Bushing | 1688 |
| Extension Rod Stop Button Spring Retainer Pin | 1689 |
| Extension Rod Release Button | 1690 |
| Extension Rod Release Button Bushing | 1691 |
| Extension Rod Release Button Spring | 1692 |
| Barrel Hood | 1693 |
| Barrel Hood Ring Block (front) | 1694 |
| Barrel Hood Ring Block (rear) | 1695 |
| Barrel Hood Ring Retainer Set Screw | 1695a |
| Barrel Hood Retainer Screws (four pieces) | 1696 |



M1600R