

**Mod. 1451
Sporter Target
Cal. .22 l. r.**

**Attention
Please read carefully
before you assemble
or operate this rifle.**

**Instruction
Booklet**

**Be sure
that this instruction
booklet is kept with
this firearm.**

WARNING

**THIS RIFLE IS UNSAFE FOR USE BY MINORS
EXCEPT UNDER THE SUPERVISION OF A
RESPONSIBLE AND QUALIFIED ADULT**

The privilege of ownership and use of this firearm carries a personal responsibility that should only be undertaken by someone who completely understands all the consequences of its unsafe use. The user should know and understand thoroughly all of the instructions contained in the accompanying instruction booklet for the safe and proper handling and operation of this firearm.



Dear friend of Anschütz,

You made a good choice when you decided to buy an Anschütz firearm. The many sensational successes of match shooters all over the world with Anschütz rifles made your choice easy.

Your gun has the benefit of our more than 140 years of experience in building sporting and target rifles and handguns. All over the world Anschütz firearms are esteemed because of their fine accuracy, advanced design and precision workmanship.

We manufacture:
air rifles

bolt action single shots in cal. .22 long rifle

bolt action repeaters in cal. .22 long rifle

bolt action sporting rifles in cal.:

.22 long rifle

.22 Winch. Magnum

.22 Hornet

.222 Remington

Target/Hunting Pistol in .22 long rifle,

and the famous Anschütz smallbore target and match air rifles.

Your rifle, like other Anschütz firearms, is a precision made instrument which is designed to give you many years of hunting and shooting enjoyment if you care for it properly. Therefore, it is extremely important that you read these instructions thoroughly and make sure that you understand them completely before you proceed any further to unpack, assemble and use your new rifle.

Caution

Please read carefully before operating firearm.

The privilege of ownership and safe use of a firearm carries a personal responsibility that no one should take lightly. Firearms accidents would not occur if the following rules of shooting safety were observed:

- 1) Treat every firearm as though it was loaded, even if you have personally checked it. Do not take anyone's word or automatically assume it is not loaded. Check a firearm personally each time you handle it. The safe and courteous way to carry a firearm when you are with others is to leave the bolt open so that they can easily see that the firearm cannot be fired.

- 2) Whenever you pick up your rifle, point the muzzle upward or toward the ground, open the bolt and inspect the chamber to be sure it is empty. In the same way check your rifle after use and make sure it is kept unloaded in a secure and locked place when it is not in use. Do not store your rifle and ammunition together. Make sure your rifle is unloaded before transportation.

Never run, climb a fence, hedge or tree or jump over a ditch with a loaded firearm. Never pick up your rifle with your finger or anything else inside the trigger guard.

- 3) Always point the muzzle of the barrel in a safe direction. Never aim at **ANYTHING** you do not intend to shoot. Never pull a firearm towards you by the muzzle.
- 4) Before you shoot inspect your backstop. Make sure there is no one in the vicinity of your target. Be absolutely sure of a safe backstop and target. Never fire at a hard flat surface or water. Never shoot at a skyline target or into the air. Remember that the range of a .22 caliber bullet is one mile or more.
- 5) The correct ammunition for your rifle is stamped on the barrel. Do not use any other cartridge. Use only clean and fresh factory ammunition. Load your rifle only when you are ready to shoot.
- 6) Keep your rifle clean and free from dirt. Be sure the bore is not obstructed by dirt, water, grease, snow or any other foreign materials, prior to firing. Never fire your rifle with the muzzle in the water or against any other material. Also make sure that nobody is within range of ejected empty shell casings.
- 7) Always use approved hearing protection and approved shatterproof eye protection while shooting. Note recommendations in the presently valid ISU General Technical Rules Manual, reads:

2.8 Ear protection:

All shooters and other persons in the immediate vicinity of the firing line are urged to wear ear plugs, ear muffs, or similar ear protection.

2.9 Eye protection:

All shooters are urged to wear shatterproof shooting glasses or similar eye protection while shooting.

Don't mix alcohol or drugs with shooting.

- 8) Place the safety fully into "safe" or "fire" position – **never in between**. Always keep safety in full "safe" position until ready to fire. Never place your finger on the trigger when operating the safety or when you are not ready to shoot. Place the safety in the "safe" position whenever your rifle is loaded and not to be fired immediately. Be sure muzzle is pointed in a safe direction when operating safety.

- 9) When not in use your rifle should be stored in a locked and secure place accessible only to you. Check first to make sure it is unloaded and there is no ammunition in the magazine. Always store the rifle with the bolt uncocked and preferably with the bolt open or removed from the receiver. Store ammunition in a separate and secure place.

It is your special responsibility to make sure that all times and especially when you are not present that your firearm is well secured out of any reach of children and in no way accessible to them.

If you have occasion to hand your rifle to someone else make sure that the rifle is unloaded and the bolt is open. Never let your rifle be used by anyone who is not familiar with the safe handling of firearms and these instructions.

- 10) Watch for any change in the operation of your rifle which might affect its safety. If you suspect a defect or malfunction, stop using it immediately, unload the rifle and have it checked and repaired by a competent gunsmith or send it to the factory or its recommended repair station. Disassembly, other than normal cleaning, should only be done by a factory recommended gunsmith.
- 11) When disassembling any firearm, be careful of springs which are retained under high tension and, on release, can cause personal injury.
- 12) Your Anschütz rifle has been carefully built and inspected by skilled technicians to provide maximum efficiency. The useful life depends on owner care and cleaning following the owner's manual closely.
- 13) Your rifle should always be handled with extreme care. Make sure that it is never dropped or placed in such a way that it can fall. Never use it as a lever or hitting instrument. When transporting your rifle be sure to use an approved protective gun case.

- 14) These instructions are extremely important. They should be kept with your rifle and transferred with the rifle to any new owner.
- 15) This firearm must only be operated by or under the supervision of a responsible adult.

Assembly

Please note that the stock and the barreled action for this rifle are packed separately for shipment and need to be assembled. However, do not do this until you have followed all the procedures listed below. The metal parts have been oiled and/or greased for protection during shipment and must be wiped clean before assembly and especially before firing.

Before you proceed further, you should understand how the mechanism of your rifle works. In order to fire your rifle, the action must be cocked. Cocking is done when the bolt handle is pushed forward all the way and then the bolt handle is lowered. Now the safety can be set to the "safe" position (see description of safety below) and this will lock the trigger.

The action can be uncocked by carefully following the following procedure. First make sure there is no cartridge in the chamber. Now set the safety to the "OFF" position (red "F" showing). Next raise the bolt handle as high as it will go and keep it in that position. Now pull back on the trigger as far as it will go and lower the bolt handle. Release the trigger and you can now also lock the bolt handle by setting the safety to the "ON" position (black "S" showing). This will also lock the trigger.

To reopen the bolt you must first return the safety to the "OFF" position (red "F" showing). You can now reopen and cock the bolt.

If you set the safety to the "ON" position (black "S" showing) with the bolt handle raised the trigger is locked but you can open and close the bolt to release loaded or fired cartridges.

Using a soft cloth, wipe all the external parts clean of oil. Next, remove the bolt from the barreled action. To do this, place the safety in the "OFF" position (fully forward with the black "S" covered and the red "F" showing). Then raise the bolt handle and pull the trigger back fully as far as it will go. Carefully draw the bolt out. Wipe the bolt clean of excess oil.

Next, run a dry patch through the bore of the barrel using a good cleaning rod. For correct procedure, carefully follow the directions supplied with your cleaning rod. Continue to run the cleaning rod with dry patches until the patches show no oil residue.

After you have cleaned the bore, look through the barrel to make sure there are no obstructions. If you do not see a perfect unobstructed circle all the way down the barrel, you probably have some obstruction(s) in the barrel. This must be removed before proceeding further. Again, use your cleaning rod following the manufacturer's instructions.

Warning : It is very dangerous to fire a rifle if there are any obstructions in the barrel, and the barrel must be perfectly clear before you fire the rifle.

Note : A very light film of oil is acceptable and desirable on all metal parts of your rifle for good maintenance and protection against rust. For further information about this, see "Maintenance" below.

Now with all parts of your rifle carefully wiped down, remove the two takedown screws from the stock and carefully insert the barreled action into the stock, pressing both parts together. Then insert the same screws through the stock into the action and tighten them equally.

Next, double check to make sure that there is no ammunition in the rifle. With bolt handle seated and the muzzle pointed at the ground and away from you and any person or object other than a range backstop, pull the trigger. Do this several times to get the feel of the trigger and the action. This is called "dry-firing", or firing without ammunition. Please be sure to note that excessive dry firing, however, is not recommended as it can damage your rifle and void any warranties. See Dry Firing instructions below. Please note that it is good safety practice, as well as courtesy, to leave the bolt open when you are not firing the rifle and especially when you are handling the rifle to somebody else.

Remember: A rifle with an open bolt cannot be fired!

To load and shoot

Make sure you are in a safe place to shoot and that you have the correct ammunition for your rifle. Use fresh ammunition only of the type that corresponds to the caliber marked on your rifle barrel. See numbers 1 through 15 under "Caution" above.

Make sure the bore of the barrel of your rifle is free from all obstructions.

To load the rifle for firing – (Do this only when you are in a safe place to shoot).

1. **Uncock the bolt.** Raise the bolt handle as high as it will go, pull back the trigger as far as it will go, hold the trigger in this position and lower the bolt handle.
2. Set the safety lever to the "ON" position – lever is toward the rear covering the red "F".
3. Now, try to raise the bolt handle. If you can, you have not yet uncocked the action and must do so before continuing. Move the safety lever to the "OFF" position and repeat steps number one, two and three again.
4. **Make sure that you are not touching the trigger,** move the safety lever to the "OFF" position, raise the bolt handle and briskly pull the bolt handle back all the way.
5. Now place a live cartridge in the rifle chamber, cock the firing mechanism and lock the bolt. During this procedure, the safety remains in the "ON" position, and your fingers should be kept outside the trigger guard and away from the trigger.

The rifle is now loaded for fire. With the rifle still pointed in a safe direction and toward your intended target, release the safety by pushing forward all the way on the safety button until the red "F" shows. Make sure your finger is still outside the trigger guard. Raise the rifle to your shoulder after checking to make sure that there is no obstruction between your rifle and the target. When you have the target in alignment with the sights, pull the trigger.

Trigger

Please note this rifle is furnished with a two stage trigger No. 5066/2. It has a preliminary stage of free travel or slack before engagement of the firing mechanism.

The trigger has been set by the factory to its best performance adjustment. Note the red warning label on the trigger mechanism which must never be removed.

WARNING :

Every trigger part is factory adjusted to provide optimum performance. Do not change this adjustment or tamper with the trigger. To do so can change not only the function of your rifle, but its operational safety. If you believe your trigger needs attention, take the rifle to an experienced gunsmith or factory recommended repair center.

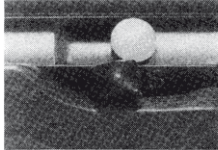
We will not be responsible for any malfunctions or the safety of your rifle if the trigger has been tampered with in any way and will consider any warranties void.

Safety

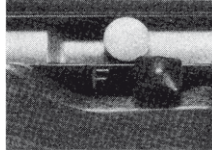
The safety must be used whenever this rifle is loaded with ammunition. It is designed to prevent the rifle from firing. It **must** be moved to its full "SAFE" or "ON" position, or full "FIRE" or "OFF" position to be effective. It has been designed to require conscious effort of the shooter to set it. Please note from the illustration below that the "SAFE" or "ON" position is with the lever set back toward the shooter and covering the red "F", with the black "S" showing. When the red "F" is showing, the rifle is in the "FIRE" position, and the safety is not on.

Note: The safety has been designed to be operated with conscious effort so that you will be aware when you set or release it.

(1) Safe position



(2) Fire position



Dry Firing

Please note that excessive dry-firing without protection can cause damage to both the firing pin and chamber rim of your rifle and will also void all warranties. We recommend that you always use an empty or "spent" cartridge case in the chamber and revolve it after each trigger pull, so that the firing pin strikes a different part of the case rim each time. Set the safety, making sure it covers the black "S". Your fingers must be outside the trigger guard during this process. Make sure once again that there is nothing between you and the target. Now raise your rifle to your shoulder and line up the target in your sights. Then, when you are in general alignment, put your trigger finger lightly on the trigger and increase the pressure until you feel and hear the mechanism "fire".

Unloading

After you have finished shooting and before you move from your shooting position, open the bolt of the rifle and be sure to keep it open with the bolt handle raised.

Now check again the chamber of your rifle to make sure there is no cartridge remaining in the chamber.

If you find an unspent round in the chamber, immediately set the safety to the "ON" position (the safety lever should cover the red "F"). Then work the bolt by lowering the bolt handle, raising it and pulling the bolt handle back crisply so that you extract and eject the cartridge. While you are doing this, be sure to keep your finger outside the trigger guard and the rifle pointed in a safe direction away from anything you do not want to shoot.

Target Peep Sights

The ST is equipped to accept Precision Sales Sight Set No. 1 or Sight Set No. 2. Both sets include an Anschütz globe front sight which takes standard Anschütz aperture inserts.

Sight set No. 1 has a micro rear peep sight with 1/4 minute click adjustments. Sight set No. 2 has the Anschütz Match micrometer peep sight.

Other Accessories Available

The ST slide rail accepts standard Anschütz hand stop and target sling swivel accessories. Additional No. 4709P butt plate spacers can be purchased.

To Adjust Butt Plate

The ST stock comes equipped with a special butt plate assembly by which it can be adjusted for length and also drop. To adjust, loosen the screw in the middle of the butt plate until the plate moves freely. With the curved section in its extreme down position, loosen the exposed screw one full turn. Now push the curved section to its uppermost position and loosen the bottom screw likewise.

Notice the open slot on the upper part and on the toe of the spacers. Push each spacer out of position to the left until the upper part is clear and then pull it completely clear using the toe slot. You can thus remove or add spacers as required to make a perfect stock pull fit. Tighten the two spacer retaining screws firmly. Next lightly tighten the plate screw and adjust the curved butt plate to the desired drop position. Then tighten screw securely.

WARNING:

Make sure only factory genuine repair parts are used for this firearm. Never interchange firing pins or bolts from one rifle to another.

Cleaning and care

To preserve your rifle in the best working condition and make sure that it is always at its best performance, you should thoroughly clean your rifle each time it has been used, and if you live in a humid climate you should clean it at least every month. Before cleaning, make sure the rifle is completely unloaded. Follow the procedures in the previous paragraph titled "Unloading".

Next, remove the bolt of the rifle (see assembly instructions). Next, using a good quality cleaning rod, pass a patch through the bore from the breech end to the muzzle, and repeat this procedure until the patches no longer pick up any barrel residues and come out clean.

If you have been doing a considerable amount of shooting, or the ammunition you have used produces excessive residue, it may be necessary to wet your patch with a good type of barrel solvent, which is non-corrosive and non-abrasive and then follow with dry patches. Be sure to follow the directions of the cleaning rod manufacturer. When you are satisfied that the bore is clean, put a slightly oiled patch through the bore using a cleaning rod in the same manner as above. One pass with the oiled patch should be sufficient. Now wipe the bolt breech and all external metal surfaces so they are covered with a light coat of oil.

Use only a non-acid resinous recognized quality gun oil, especially when cleaning the barrel bore. Other chemicals should not be used.

Use extra care if dismantling the bolt to keep the Catch Bolt Pin (No. 1383-21) and Catch Bolt Spring (No. 1393-9) in place. These small components are only retained in place by the bolt head and when this is removed they can be lost. The bolt will not operate correctly without them.

We wish you a lot of fun and success with your new rifle!

Yours

J. G. ANSCHÜTZ GMBH & Co. KG

No.	Part-No.	Denomination
1	1383-19	Spring clamp
2*	1450-14/1	Bolt head
3	1420-7/1	Extractor
4	1420-8/1	Cartridge retainer
5	1357-10	Firing pin spring
6*	1357-17	Firing pin
7	1442-5	Striker pin
8	1442-7	Striker spring
10	1393-9	Catch bolt spring
11	1383-21	Catch bolt
12*	1451-U2	Bolt with handle
13	1442-6/1	Guide bolt
14	1442-4	Cocking piece
16*	1451-U4	Bolt assembly
17**	1383-22	Loading platform
18	1451-2-ST	Receiver
19	Riko 3x12 ähnl. DIN 7	Cylindrical pin
20**	M 3 x 5 DIN 63	Screw for loading platform
33*	1451-1/1 ST	Barrel
35	5066-5/1	Release plunger
36	5067-6	Release plunger spring
37	5066-1	Trigger housing
38	2,5x10 DIN 1481	Clamping pin
39	Riko 2,5 x10 ähnl. DIN 7	Cylindrical pin (2)
40	M 3 DIN 439	Hexagon nut (2)
41	5066-U/1/1	Trigger
42	6680-4	Trigger spring
43	5066-10	Springbolt
44	5066-9	Pan head screw
46	5067-4/2	Safety lever
47	1,9 DIN 6799	Retaining collar (2)
48	5067-10	Pin
50	1/8" DIN 5401	Detent ball
51	5091-18/1	Leaf spring
52	5066/2	Two stage trigger assembly
53	3 DIN 137	Toothed lock washer (2)
54	M 3 x 6 DIN 7985	Pan head screw (2)
58	1451-U3 ST	Stock
68	5,1 x 5 x18 JGA-N70	Threaded sleeve
69	M 5 x 49 JGA-N50 a	Pan head screw
71	1450-15/1	Trigger guard
72	3x15 DIN 7995	Counter/sunk oval head wood screw
73	M 4 x 26,5 JGA-N51b	Screw
75	4709-A-6	Cylindrical pin
76	4709-A-4	Cover plate
77	4709-A-5	Nut
78	4709-A-1/1	Guide plate
79	M 5 x 50 DIN 85	Screw (2)
80	4709-A-U1	Butt plate
81	M 6 x 0,75 x14 JGA-N50a	Screw
**	1427-15/3	Swivel rail
**	4 x 20 DIN 7917	Screws for same (3)

*For replacement by qualified gunsmith only.

**Part not illustrated

WARNING: Make sure only factory genuine repair parts are used for this firearm.
Never interchange firing pins or bolts from one rifle to another.



List of component parts

Make sure only factory genuine repair parts are used for this firearm.
Never interchange firing pins or bolts from one rifle to another.

Mod. 1451 Sporter Target

